

Structure and Function in Living Systems

Name: _____

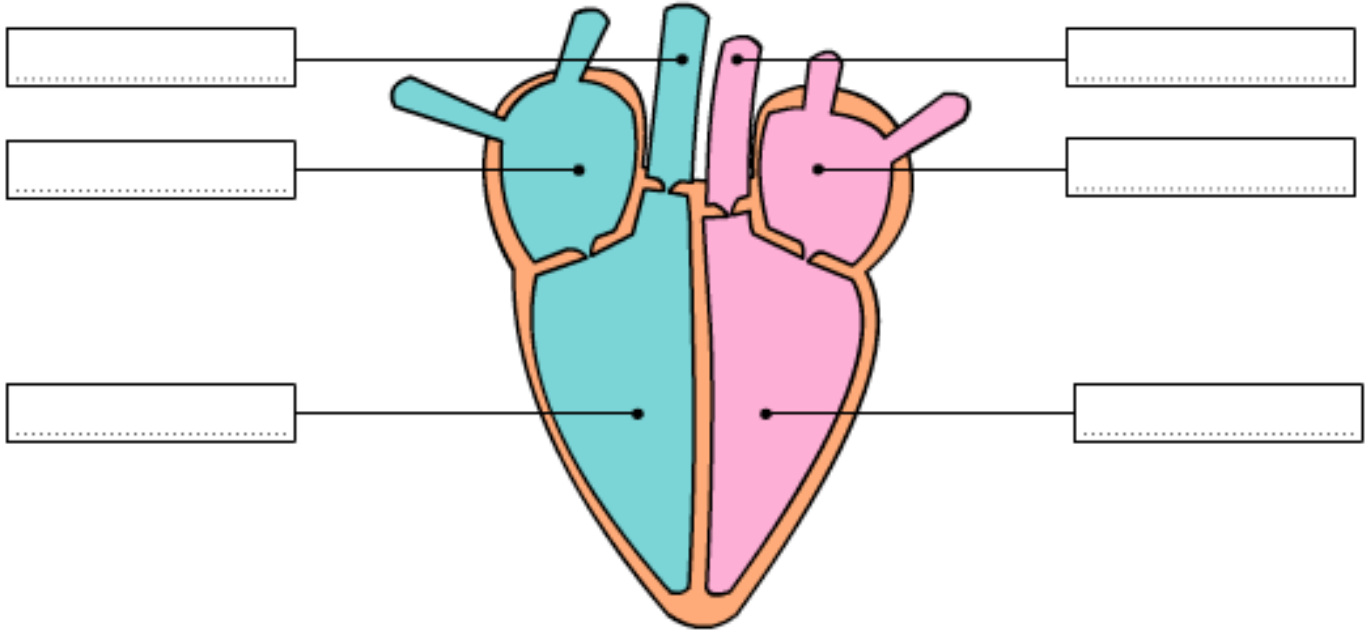
Brainpop—Heart

Period: _____

Watch the Brainpop on the heart, then fill out the page below. You can also use Chapter 16, Section 1 to help you.

Fill in the labels with terms from the word bank below:

left ventricle right ventricle left atrium
right atrium to the lungs to the body



-
- _____ 1. Each side of your heart consists of:
a. an allele and a ventricle
b. an atrium and a ventricle
c. an atrium and a vesicle
- _____ 2. When does your heart beat faster than normal?
a. when your muscles are working hard
b. when you are very nervous
c. both a and b
- _____ 3. What is the heart made of?
a. skin tissue
b. connective tissue
c. muscle tissue
- _____ 4. What do your atria do?
a. bring blood into the heart
b. pump blood out of the heart
c. enrich blood with oxygen
- _____ 5. Your heart is roughly the same size as:
a. your fist
b. your head
c. your arm
- _____ 6. How long does it take to pump blood through your entire body?
a. about a minute
b. about 7 minutes
c. about 15 minutes
- _____ 7. How is the heart different from other muscles?
a. it never gets tired
b. it cramps up pretty frequently
c. both a and b
- _____ 8. Where does the heart send used blood?
a. to the muscles
b. to the larynx
c. to the lungs
- _____ 9. What do your ventricles do?
a. pump blood out of the heart
b. bring blood into the heart
c. enrich blood with oxygen