

Cell Biology
Building a Eukaryotic Cell

Name: _____
 Period: _____

Use Chapter 4, Section 2 of your textbook to help you with this assignment. Check off each box as you finish that part of the instructions.

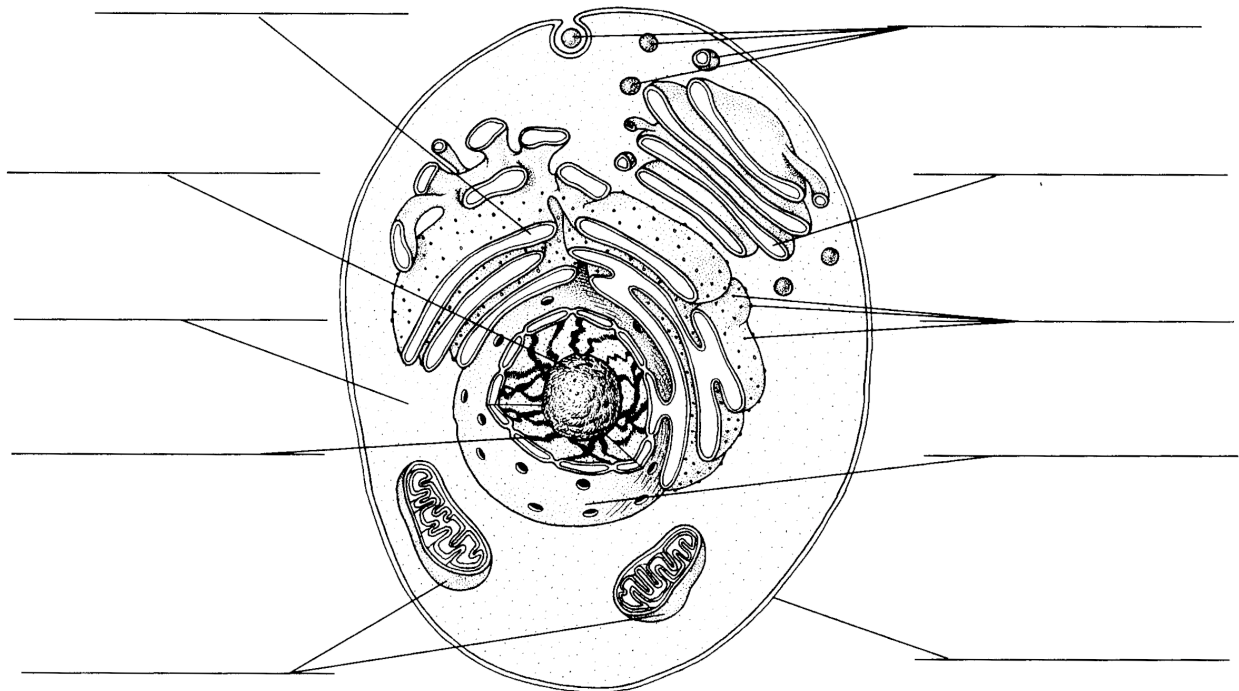
Part 1

Below is a list of parts that are commonly found in eukaryotic cells. Most are found in both plant and animal cells, but a few are just found in plant cells alone. Next to each part there is a blank. Write a "P" in the blank if the part is only associated with *plant* cells, or write a "B" if it is found in *both* animal and plant cells.

- | | | |
|----------------------------------|---------------------|---------------------|
| _____ ribosomes | _____ Golgi complex | _____ nucleus |
| _____ mitochondria | _____ cell wall | _____ large vacuole |
| _____ cell membrane | _____ lysosomes | _____ DNA |
| _____ nucleolus | _____ cytoplasm | _____ chloroplasts |
| _____ endoplasmic reticulum (ER) | | |

Part 2

Label the eukaryotic cell diagram below. You will use all of the parts that you labeled with a "B" above. You will not use *any* of the parts you labeled with a "P" because the cell below belongs to an animal.



Part 3

Color the cell diagram above with colored pencils, using the same colors your textbook used for the organelles. Make sure to do the coloring lightly, so you can still see the details of the diagram.