

# Structure and Function in Living Systems

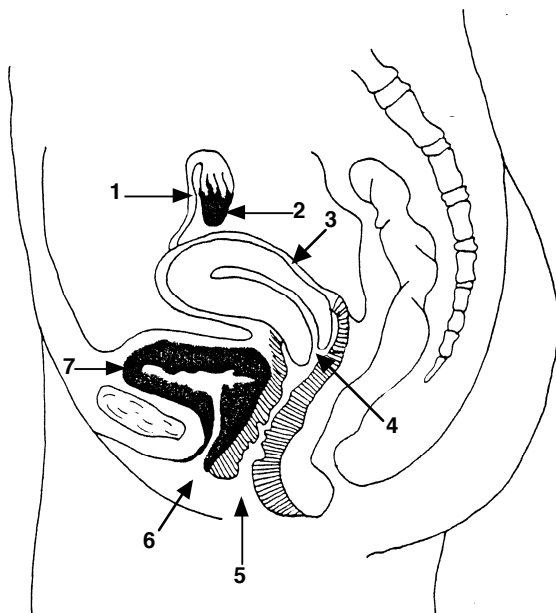
Name:

## Female Reproductive Parts

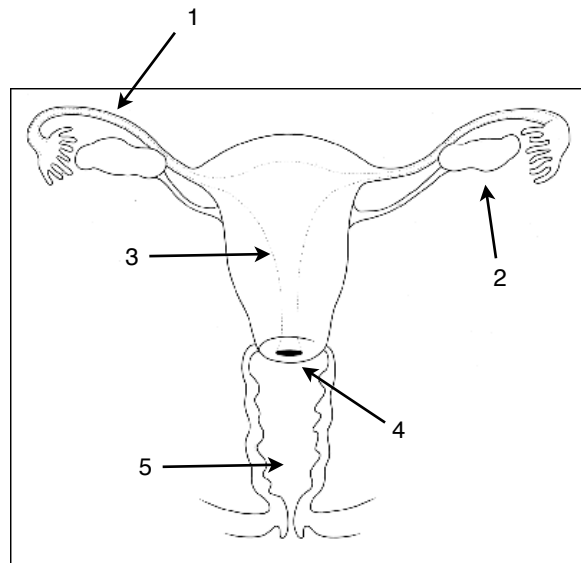
Period:

Match the number and the function of the part to the terms below. Chapter 18, Section 1 will help.

picture number	term	function letter	function
	bladder		a) opening to uterus (lets sperm in)
	cervix		b) female reproductive cell
	fallopian tube		c) stores urine
not pictured	egg		d) path for egg to uterus
	ovaries		e) fetus normally develops here
	urethra		f) eggs develop here
	uterus		g) tube for urine to leave the body
	vagina		h) birth canal; sperm deposited here



side view



front view