

## Labeling Drawings

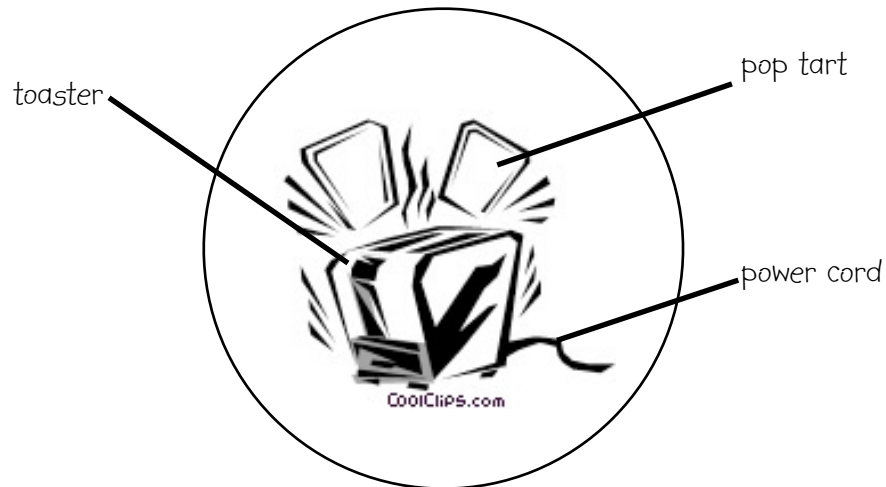
Name:

Period:

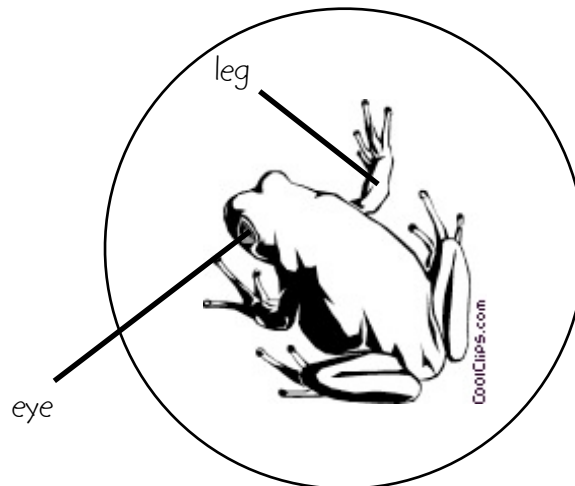
Follow the instructions below to learn how to accurately label drawings you will make in science class.

When you label a drawing in science class:

- the label must be outside of the drawing
- the label must be written neatly and spelled correctly
- a line must go from the label to that part of the drawing
- the line must touch the part of the drawing that you are labeling



Analyze the labeled diagrams below. Check off the boxes that are true.



- the labels are outside the drawing
- the label is written neatly and spelled correctly
- lines go from each label to that part of the drawing
- each line touches that part of the drawing

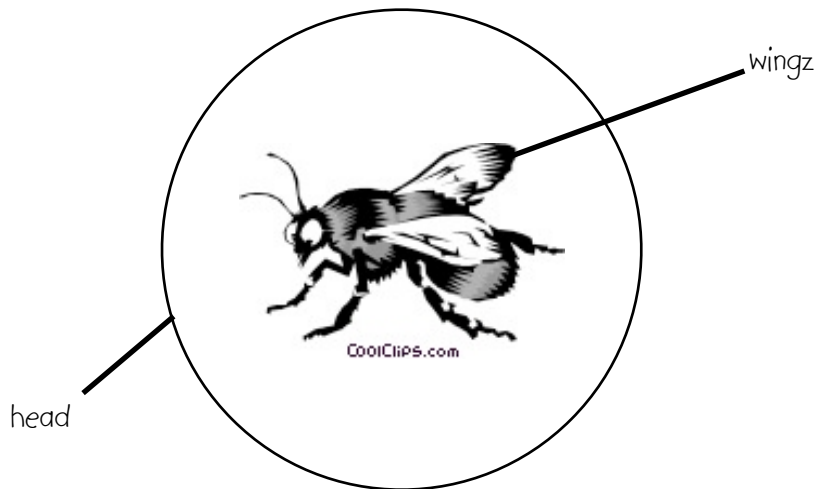
Is this diagram of a frog properly labeled? Explain why or why not.

Work: 10 points

## Labeling Drawings

Name:

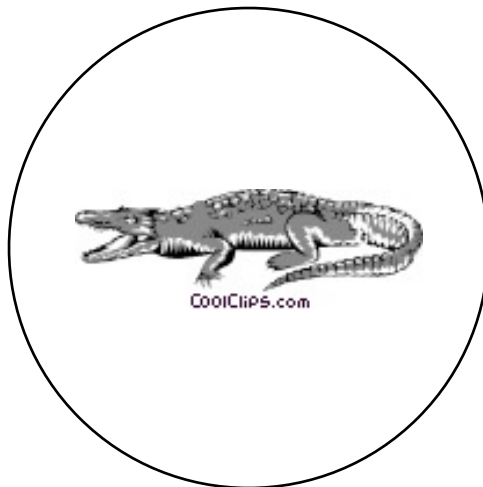
Period:



- the labels are outside the drawing
- the label is written neatly and spelled correctly
- lines go from each label to that part of the drawing
- each line touches that part of the drawing

Is this diagram of a bee properly labeled? Explain why or why not.

*In the circle below, label the parts of the crocodile. Label its **teeth**, **eye**, **tail**, and **leg**. After you have labeled it, go through the checklist and make sure all parts are labeled correctly.*



- the labels are outside the drawing
- the label is written neatly and spelled correctly
- lines go from each label to that part of the drawing
- each line touches that part of the drawing

Work: 10 points