

Photosynthesis Part 2

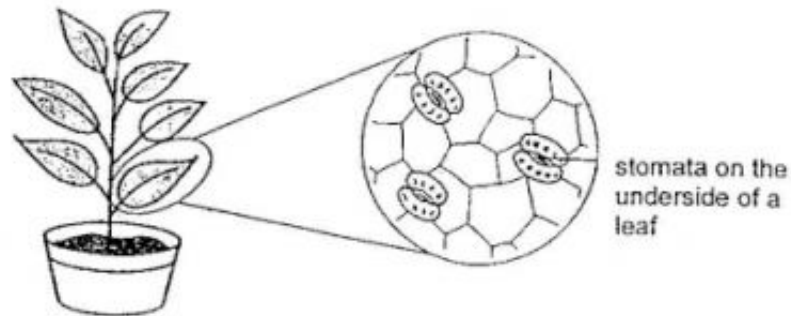
Name: _____

Period: _____

Use Chapter 13, Section 1 of your textbook to answer the questions below. A ★ means a two word answer.

Gas Exchange (p.398)

1. The waxy coating that protects a plant from water loss is the _____.
2. The opening in a leaf's epidermis and cuticle is the _____.
3. The "double doors" that open and close the stoma are the _____. ★
4. The process by which plants release water vapor into the air is _____.



5. What is the gas that goes into a leaf through its stomata? _____ ★
6. What is the gas that goes out of a leaf through its stomata? _____
7. What liquid goes out of a leaf through its stomata? _____

The Importance of Photosynthesis (p.399)

- _____ 8. Which of the following do NOT form the base of most food chains on Earth?
a. plants b. bacteria c. mice d. protists
- _____ 9. What happens during photosynthesis?
a. Plants store light energy as chemical energy.
b. Plants give off carbon dioxide.
c. Plants store chemical energy as light energy.
d. Plants take in oxygen.
- _____ 10. Which of the following do most organisms rely on to get energy?
a. photosynthesis b. transpiration c. fertilization d. cellular respiration
- _____ 11. Which of the following gases is a byproduct of photosynthesis?
a. carbon dioxide b. oxygen c. carbon monoxide d. hydrogen
- _____ 12. Which of the following processes provides oxygen needed for cellular respiration?
a. fertilization b. pollination c. photosynthesis d. transpiration

Work: 6 points